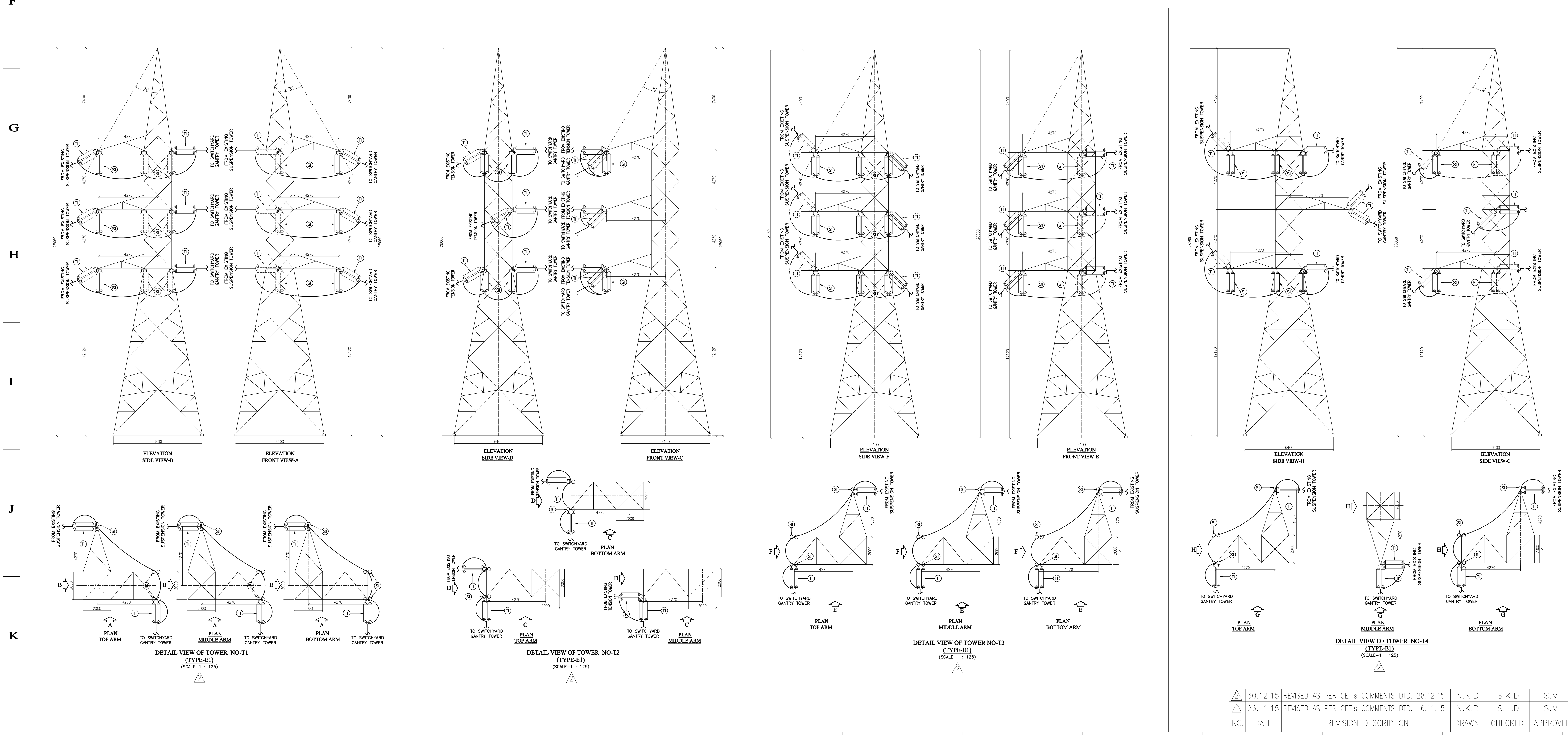


PLAN  
(SCALE-1 : 600)



TOWER DETAILS :-

SL. NO.	TOWER NO.	TYPE OF TOWER	HEIGHT OF TOWER	QTY. OF TOWER	DESCRIPTION	SYMBOL
1	T1	S/C TENSION TYPE (ARMS AT TWO SIDES BUT AT RIGHT ANGLE) (TOWER TYPE-E1)	28.06 METER	1 NO.	(1) ROAD	
2	T2	S/C TENSION TYPE (ARMS AT ONE SIDE ONLY) (TOWER TYPE-E1)	28.06 METER	1 NO.	(2) PUCCA DRAIN	
3	T3	S/C TENSION TYPE (ARMS AT TWO SIDES BUT AT RIGHT ANGLE) (TOWER TYPE-E1)	28.06 METER	1 NO.	(3) EXISTING 33KV POLE	
4	T4	D/C TENSION TYPE (ARMS AT THREE SIDES) (TOWER TYPE-E1)	28.06 METER	1 NO.	(4) EXISTING 132KV TOWER	
					(5) PROPOSED 132KV TOWER	
					(6) EXISTING ROUTE OF 132KV CONDUCTOR	
					(7) PROPOSED ROUTE OF 132KV CONDUCTOR	
					(8) EXISTING 33KV CONDUCTOR	
					(9) RAILWAY TRACK	
					(10) 132KV COMPOSITE SILICON RUBBER LONG ROD DOUBLE SUSPENSION INSULATOR	
					(11) 132KV COMPOSITE SILICON RUBBER LONG ROD DOUBLE TENSION INSULATOR	

PROPOSED TRANSMISSION TOWER CO-ORDINATE LIST :-

TOWER NO.	X-DIRECTION	Y-DIRECTION
T1	3665.33	6786.22
T2	3647.56	6779.73
T3	3665.30	6819.95
T4	3655.92	6834.96

SUBSTATION CO-ORDINATE LIST :-

SL. NO.	X-DIRECTION	Y-DIRECTION
A	3610.41	6763.14
B	3610.41	6838.14
C	3565.91	6838.14
D	3559.00	6816.00
E	3559.00	6763.14

- NOTES :-
- ALL DIMENSIONS ARE IN MM UNLESS OTHERWISE STATED.
  - NORTH LINE ARE ORIENTED WITH RESPECT TO MAGNETIC NORTH.
  - CO-ORDINATE SHOWN IN THIS DRAWING ARE IN UTM CO-ORDINATE.
  - AS PER IS : 802 (PART-1/SEC.-1) : 1995, CLAUSE NO. 6.1, SMALL ANGLE TOWERS (0° TO 15°) WITH TENSION STRING - TO BE USED FOR LINE DEVIATION FROM 0° TO 15°.

STEEL AUTHORITY OF INDIA LTD. BOKARO STEEL PLANT  
 CONSULTANT CENTRE FOR ENGINEERING & TECHNOLOGY

UNIT	STEEL MELTING SHOP I	PROJECT	
		SUB-CONTRACTOR	
		SUB CONTRACTOR DRG. NO.	

CONTRACTOR DRG. NO.	NAME	SIGN.	DATE	TITLE	REV.
	N.K.D		19.10.15	132KV DOUBLE CIRCUIT LILO ARRANGEMENT OF NEW MSDS (132/330.433KV) SUB-STATION AT BOKARO STEEL PLANT, JHARKHAND.	0
	S.M		19.10.15		AS SHOWN
	S.K.D		19.10.15		SIZE
	SATCON		19.10.15		A0

PROJECT DRG. NO.		REV.	SHEET OF
		1	1 OF 1

NO.	DATE	REVISION DESCRIPTION	DRAWN	CHECKED	APPROVED
30.12.15		REVISED AS PER CET'S COMMENTS DTD. 28.12.15	N.K.D	S.K.D	S.M
26.11.15		REVISED AS PER CET'S COMMENTS DTD. 16.11.15	N.K.D	S.K.D	S.M